



MONTHLY MEMBERSHIP PROGRESS REPORT

District 27 D2

Results as of: 06/30/2019

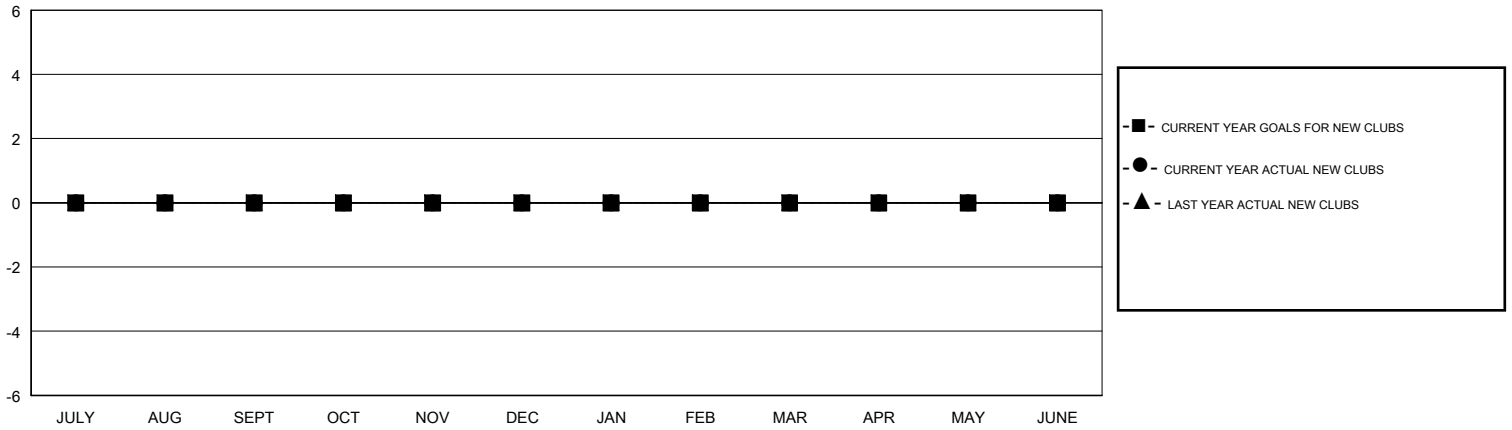
GMT: OPEN

LOCATION WISCONSIN

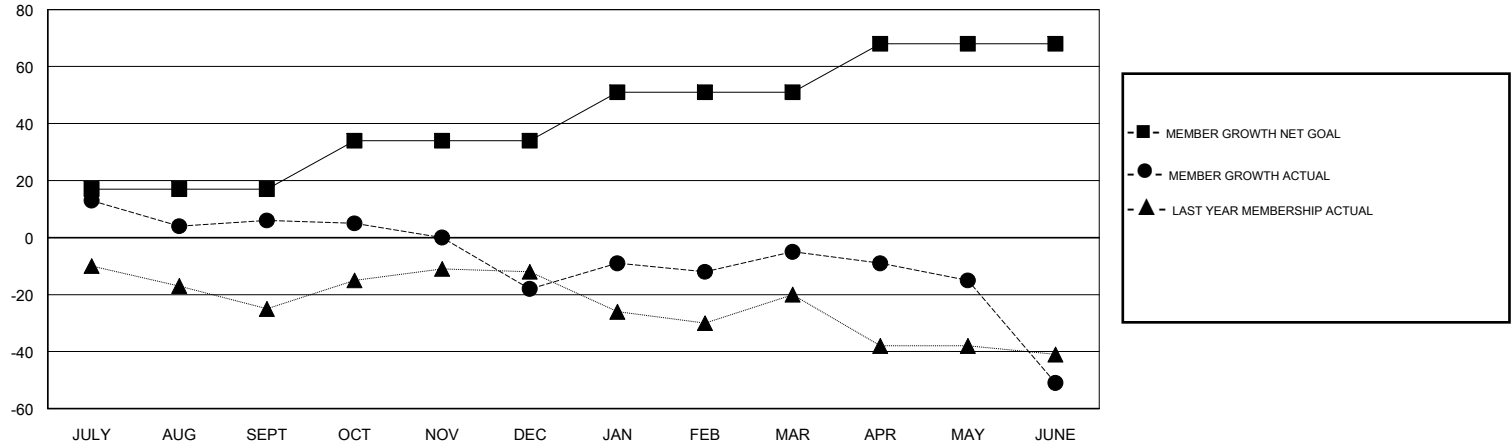
GMT CA

| Clubs | | | | Members | | | |
|-----------------------|---------------|-----------|---------------|-----------------------|------------------------|----------------------|--|
| RESULTS FOR 2018-2019 | | | | RESULTS FOR 2018-2019 | | | |
| QUARTER | NEW CLUB GOAL | NEW CLUBS | DROPPED CLUBS | QUARTER | MEMBER GROWTH NET GOAL | MEMBER GROWTH ACTUAL | DROPPED MEMBERS ACTUAL (including transfers) |
| JULY/AUG/SEPT | 0 | 0 | 0 | JULY/AUG/SEPT | 17 | 55 | 41 |
| OCT/NOV/DEC | 0 | 0 | 1 | OCT/NOV/DEC | 17 | 30 | 54 |
| JAN/FEB/MAR | 0 | 0 | 0 | JAN/FEB/MAR | 17 | 53 | 35 |
| APR/MAY/JUNE | 0 | 0 | 0 | APR/MAY/JUNE | 17 | 39 | 78 |

GOALS AND ACTUAL NEW CLUBS CUMULATIVE



GOALS AND ACTUAL MEMBERS CUMULATIVE



| | | |
|---|---|--|
| DROPPED CLUBS: 1 | 39 CLUBS OF 49 ADDED 1 OR MORE NEW MEMBERS | <u>GENDER DISTRIBUTION</u> MALE 1,189 (73.99%) FEMALE 418 (26.01%) Women Percentage Fiscal Year Goal: 25% |
| <u>DROPPED MEMBERS</u> DECEASED 23 CLUB CANCELLED 7 OTHER 178 TOTAL 208 | CLICK HERE FOR CUMULATIVE MEMBERSHIP DATA | TOTAL FAMILY UNIT MEMBERS 369 FAMILY MEMBERS PAYING HALF DUES 189 |